

# V-CHECK 4RCP T12

Power Frequency Overvoltage Protection Devices  
SPD+POP



## General Data

Internal configuration	3+1
No. Poles	8-Pole
No. poles + configuration	4 Poles, 3P+N
No. DIN rail modules	8
Network configuration	TT, TNS
IEC SPD Type	Class I+II
EN SPD Type	Type 1+2
Format	Pluggable
Protection Modes	L-N / N-PE
Product standards	EN 61643-11



## PART NUMBERS

<b>XXXX</b>	<b>4RCP</b>
V-CHECK <b>XXXX</b> T12	77706590
V-CHECK <b>XXXX</b> T12 IR (with Remote Indication)	77706592

## POWER FREQUENCY OVERVOLTAGE PROTECTOR (POP)

V-CHECK <b>XXXX</b> T12, V-CHECK <b>XXXX</b> T12 IR (with Remote Indication)	<b>4RCP</b>
Actuation method	Contacttor
Test button	Yes

Limit values for response and non-response times according to UNE-EN 50550:

Voltages (V)	255	275	300	350	400
Maximum break time (s)	No tripping	15	5	0,75	0,20
Minimum non-actuating time (s)		3	1	0,25	0,07

## SURGE PROTECTION DEVICE (SPD) - IEC TECHNICAL FEATURES

V-CHECK <b>XXXX</b> T12, V-CHECK <b>XXXX</b> T12 IR (with Remote Indication)	<b>4RCP</b>
Maximum continuous operating voltage (AC) - Uc (L-N) [V]	275
Maximum continuous operating voltage (AC) - Uc (N-PE) [V]	255
Nominal voltage AC 50-60 Hz - Un [V]	230/400
Nominal voltage AC 50-60 Hz - Un(L-L) [V]	400
Nominal voltage AC 50-60 Hz - Un(L-N) [V]	230
Nominal discharge current (8/20) - In (L-N) [kA]	20
Nominal discharge current (8/20) - In (N-PE) [kA]	50
Max Discharge Current (8/20) - I <sub>max</sub> (L-N) [kA]	65
Voltage protection level at In - Up (L-N) [kV]	≤1,3
Voltage protection level at In - Up (N-PE) [kV]	≤1,5
Following current - I <sub>fi</sub> [A]	100
Response time - t <sub>A</sub> (L-N) [ns]	≤25
Response time - t <sub>A</sub> (N-PE) [ns]	≤100
Dynamic thermal disconnection	Yes

## DATASHEET

This document is subject to change at any time without notice [www.cirprotec.com](http://www.cirprotec.com) | Lepanto 49 · 08223 Terrassa, Barcelona Spain © 2024 Cirprotec SLU | All rights reserved

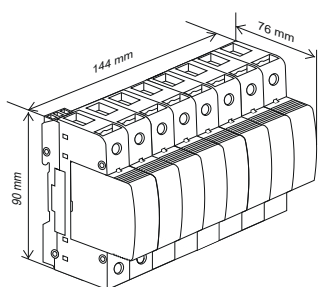
**cirprotec**

# V-CHECK 4RCP T12

## MECHANICAL AND ENVIRONMENTAL FEATURES

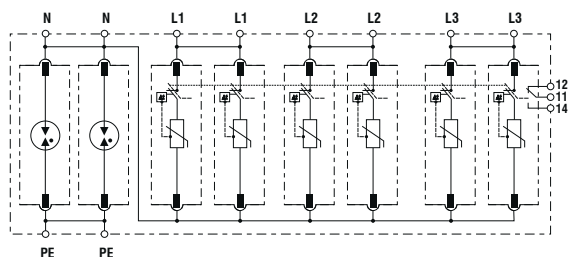
V-CHECK <b>XXXX</b> T12, V-CHECK <b>XXXX</b> T12 IR (with Remote Indication)	<b>4RCP</b>
Temperature range [°C]	-5 ... 40
Humidity range [%]	5 ... 95
Indication System Type	LED
Insulating material	PA66 CT1
Enclosure - IP	IP20
Flammability class	UL94 V-0

## DIMENSIONS AND WEIGHT



V-CHECK <b>XXXX</b> T12 V-CHECK <b>XXXX</b> T12 IR (with Remote Indication)	<b>4RCP</b>
Net Weight [kg]	1.079
Gross weight [kg]	1.173
Packaging dimensions (H x W x L) [mm]	145 x 136 x 86

## INTERNAL CONFIGURATION



## DATASHEET