

CPS Block Split Phase 120 V

Power Line SPDs
NEMA - TVSS



General Data

Surge modules	5
Network configuration	Split Phase
IEC SPD Type	Class II
UL SPD Type	Type 2
Format	Monobloc
Protection Modes	Common & differential protection
Product standards	IEC 61643-11; UL 1449 4th edition



PART NUMBERS

XXX	120	160	200
CPS block XXXkA SPLIT Ph120V	77798613	77798633	77798653

SURGE PROTECTION DEVICE (SPD) - IEC TECHNICAL FEATURES

CPS block XXXkA SPLIT Ph120V	120	160	200
Nominal voltage AC 50-60 Hz - Un [V]		120	
Nominal voltage AC 50-60 Hz - Un(L-N) [V]		120	
Max Discharge Current (8/20) - I _{max}	120kA/ph	160kA/ph	200kA/ph
Maximum back-up fuse [A [gG]]		80	
Response time - t _A [ns]		≤1	
Dynamic thermal disconnection		Yes	

SURGE PROTECTION DEVICE (SPD) - UL TECHNICAL FEATURES

CPS block XXXkA SPLIT Ph120V	120	160	200
Nominal discharge current (8/20) - I _n [kA]		20	
Maximum continuous operating voltage - MCOV (L-N) [V]		150	
Voltage protection rating - VPR (L-L) [V]		1200	
Voltage protection rating - VPR (L-N) [V]		600	
Voltage protection rating - VPR (L-G) [V]		600	
Voltage protection rating - VPR (N-G) [V]		600	
Short-Circuit Current Rating-SCCR [kA]		200	
Multi-discharge system - MDS		Yes	

TECHNICAL FEATURES

CPS block XXXkA SPLIT Ph120V	120	160	200
Intelligent aging display led - IAD		100, 66, 33, 0 %	

DATASHEET

This document is subject to change at any time without notice www.cirprotec.com | Lepanto 49 · 08223 Terrassa, Barcelona Spain © 2024 Cirprotec SLU | All rights reserved

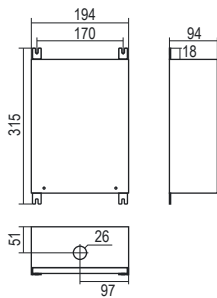
cirprotec

CPS Block Split Phase 120 V

MECHANICAL AND ENVIRONMENTAL FEATURES

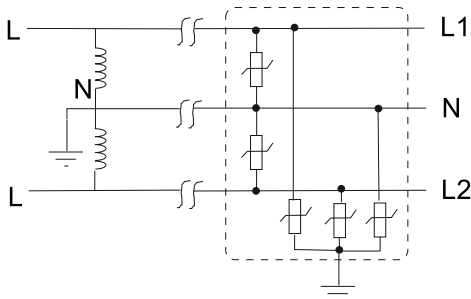
CPS block XXX kA SPLIT Ph120V	120	160	200
Temperature range [°C]	-40 ... 70		
Indication System Type	Protection status LED		
Enclosure - IP	IP55		
Stranded conductor cross section	2,5 mm ²		
Stranded conductor AWG dimensions	#14		

DIMENSIONS AND WEIGHT



CPS block XXX kA SPLIT Ph120V	120	160	200
Net Weight [kg]	3.87		
Gross weight [kg]	4.15		
Packaging dimensions (H x W x L) [mm]	390 × 300 × 100		

INTERNAL CONFIGURATION



DATASHEET